



KONINKLIJKE ROEIVERENIGING SPORT GENT GHENT INTERNATIONAL MAY REGATTA 6 & 7 MEI 2023

INTERNATIONAL BELGIAN SENIOR ROWING CHAMPIONSHIPS
INTERNATIONAL BELGIAN U23 ROWING CHAMPIONSHIPS
INTERNATIONAL FLEMISH U19 ROWING CHAMPIONSHIPS



TEAM MANAGERS MANUAL – MANUEL DES
CHEFS D'ÉQUIPE - PLOEGLEIDERSHANDBOEK



Watersportbaan “Georges Nachez”



WWW.KRSG.BE





TEAM MANAGERS MANUAL

43rd INTERNATIONAL BELGIAN ROWING CHAMPIONSHIPS FOR SENIORS

TROPHY “ROLAND ROMBAUT”

6th INTERNATIONAL BELGIAN ROWING UNDER 23 CHAMPIONSHIPS

TROPHY “SPORT VLAANDEREN”

18th INTERNATIONAL FLEMISH ROWING UNDER 19 CHAMPIONSHIPS

TROPHY “CITY OF GHENT”

102nd GHENT INTERNATIONAL MAY REGATTA

TROPHY “1883-2008 - 125 YEARS SPORT GENT”

May 6 & 7, 2023

Regatta course “Georges Nachez” - Ghent

Organised by

KONINKLIJKE ROEIVERENIGING SPORT GENT 1883 vzw.

Under protection of the

In collaboration with

Royal Belgian Rowing Federation
Vlaamse Roeiliga
Sport Vlaanderen
City of Ghent



KEY PERSONS ORGANISING COMMITTEE



Regatta President
Patrick Rombaut



Regatta Secretary
Chantal Neirinckx



Technical Delegate
Peter van Belle



Jury President
Jean-Pierre Follet



Medical Officers
Dr. Ruben De Gendt



Dr. Katrien Bonte



Technical Co-ordinator
Tony Hinderyckx



Finish tower coordinator
Luc De Maré

**ALL PRACTICAL INFORMATION CAN BE COLLECTED AT
THE INFORMATION DESK IN THE CLUBHOUSE OF THE
ORGANISING CLUB “SPORT GENT” OR AT WWW.KRSG.BE**

JURY

President	Follet Jean-Pierre	BEL
Secretary	Renting Anton	BEL
	Deweert Daniël	BEL
Members	Bjornskiold Per	SWE
	Bolcic Fabio	ITA
	Botelho Nuno	POR
	Carrera Paula	ESP
	Costa Alberto	ITA
	Cotgrove Joanne	GBR
	Daetwyler Paul	SUI
	De Jong Leonie	NED
	De Jonge Yves	BEL
	De Wispelaere Annemarie	BEL
	Derman Etem	TUR
	Dimouawa Martine	CMR
	Dostal Radim	CZE
	Fernagut Robin	BEL
	Frans Kjelle	BEL
	Hinterding Carmen	BEL
	Lokker Bram	NED
	Malisse Lieven	BEL
	Meisner Kirsten	USA
	Ounis Houcine	TUN
	Parquic Nicholas	FRA
	Roubroeks Johannes	SWE
	Sautois Roland	BEL
	Siegler Holger	GER
	Szabo Eli	ISR
	Valciukaite Milda	LTU
	Wittrant Catherine	FRA
	Wouters Paul	BEL

Jury Meetings	Friday May 5, 2023	19h00 CVO Antonius Triestlaan 10 (map page 4)
	Saturday May 6, 2023	06h45 Club house Sport Gent
	Sunday May 7, 2023	06h30 Club house Sport Gent

Team managers are not allowed to attend the jury meetings

PRACTICAL INFORMATION

VENUE MAPS & IMPORTANT INSTRUCTIONS FROM THE POLICE AND THE AUTHORITIES

No cars / trailers are allowed on the green!

Only boats on stretchers.

Cars must be parked regular on the parking lanes.

Please note: there is paid parking in some zones.

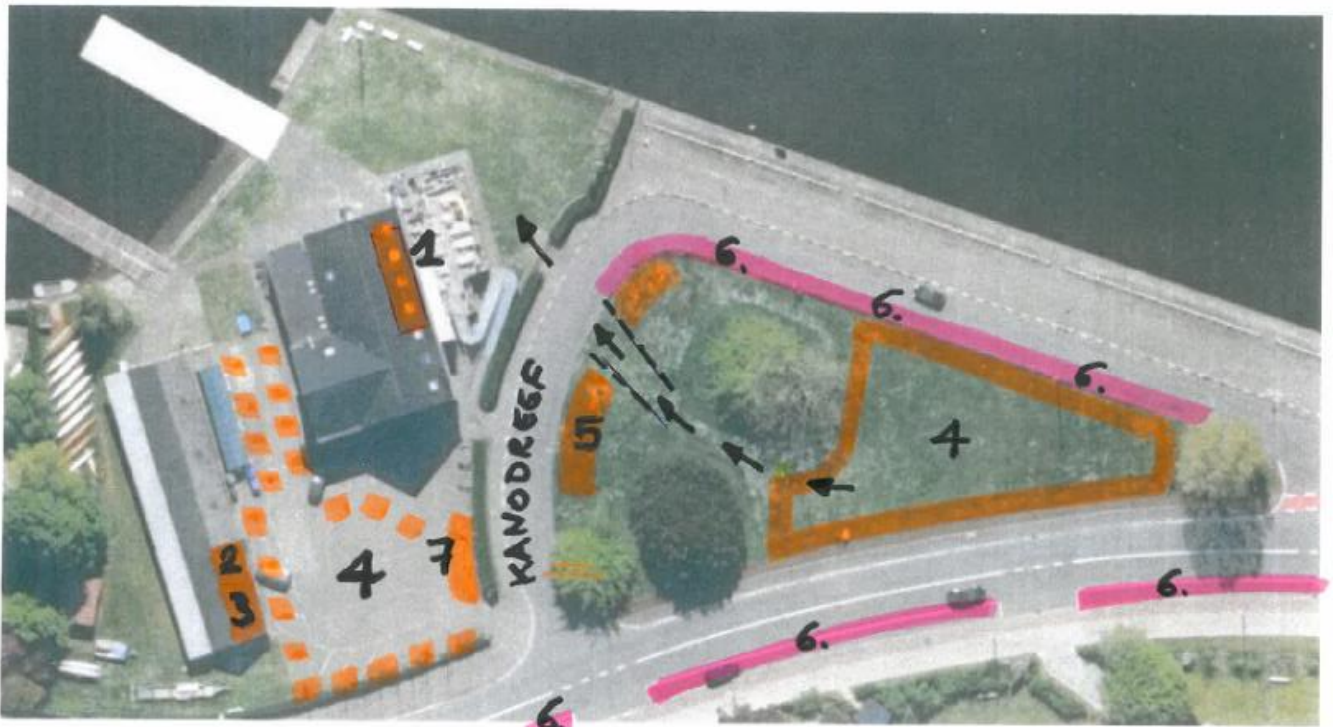
On Sunday parking is free.

All people must strictly follow the indications given by the staff in charge of the security and/or the traffic police.

The traffic police will penalize everybody who doesn't follow the rules.

- 1 = Regatta Secretary
- 2 = Athletes weighing
- 3 = Medico

- 4 = Boat park (only boats – NO CARS, NO TRAILERS)
- 5 = Regatta Village
- 6 = Paid Parking (only free parking on Sunday)
- 7 = Public Toilets



To reach the parking and boat park areas, you must use **ONLY** the Noorderlaan, as the road is closed on the Zuiderlaan!



 = ROAD CLOSED – constructionworks

ORGANISING CLUB (KRSG) - FINISH & BOAT PARK AREA



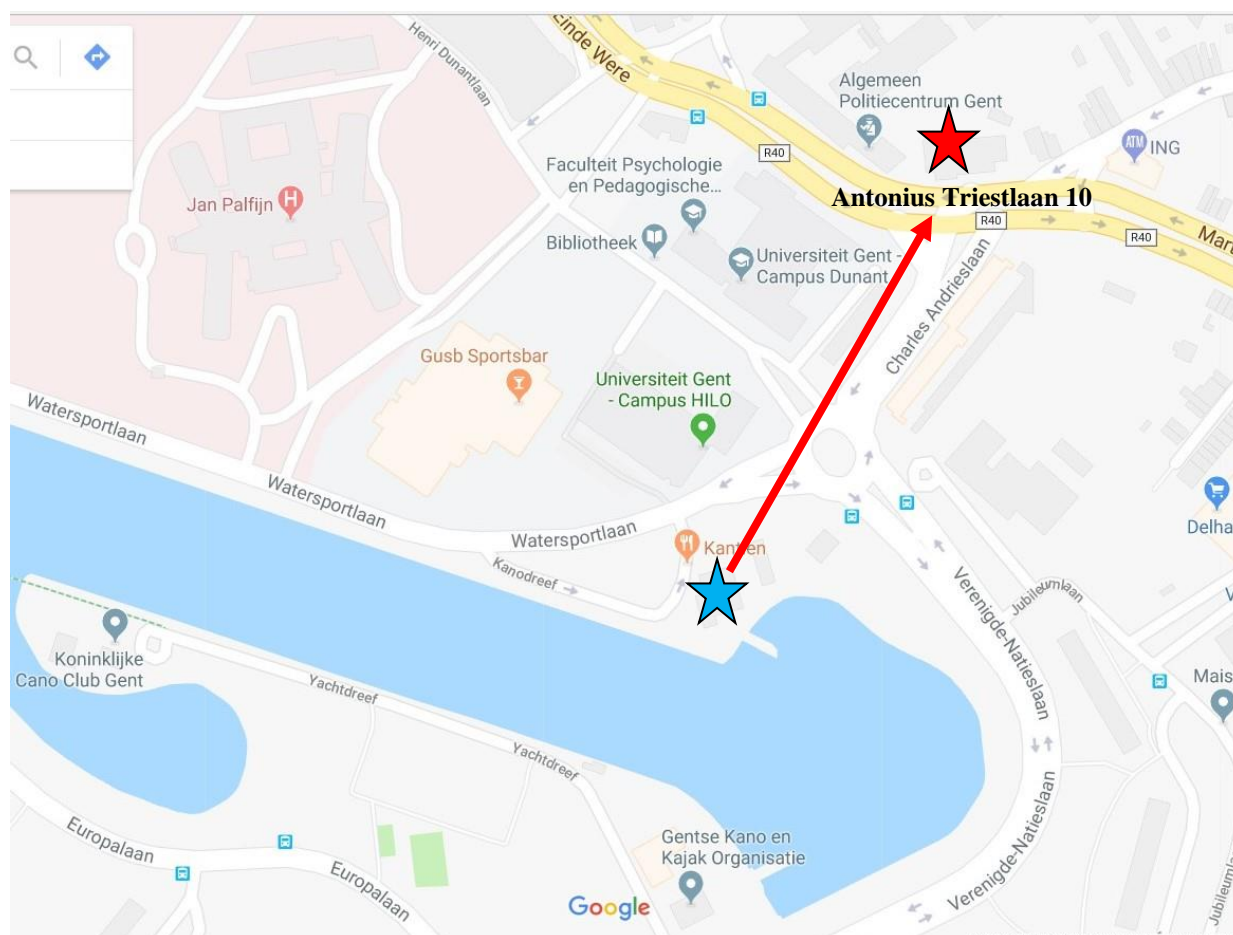
TEAM MANAGERS MEETING

Time and place

Friday May 5, 2023 at 20h00 - ***CVO Antonius Triestlaan 10 (map below)***

Attendance

The attendance of all team managers is highly recommended



PROTEST

Procedure

cf. World Rowing Rule Book SECTION 11-Rules 75 to 79 (see WR Rule Book app: <https://worldrowing.com/2021/05/20/the-world-rowing-rule-book-app-is-now-available/>)

Confirmation

All protests have to be lodged in writing with a deposit of € 100 and confirmed at the finish tower to the regatta secretary Mr. Luc De Maré, who will immediately inform the President of the Jury.



TIME TABLE HEATS

Saturday May 06

By time

Heats		
112	BW 2X	08:15
119	M 2-	08:21
122	M 2X	08:27
130	W 4X	08:33
133	M 4-	08:39
134	BM 1X	08:45
118	LW 2X	08:51
136	M 1X	08:56
141	BW 1X	09:03
137	BLM 1X	09:09
140	LM 1X	09:18
144	BLW 1X	09:24
143	W 1X	09:30
146	LW 1X	09:36
145	W 8+	11:43
152	M 8+	11:51

By race n°

Heats		
112	BW 2X	08:15
118	LW 2X	08:51
119	M 2-	08:21
122	M 2X	08:27
130	W 4X	08:33
133	M 4-	08:39
134	BM 1X	08:45
136	M 1X	08:56
137	BLM 1X	09:09
140	LM 1X	09:18
141	BW 1X	09:03
143	W 1X	09:30
144	BLW 1X	09:24
145	W 8+	11:43
146	LW 1X	09:36
152	M 8+	11:51

Sunday May 07

Heats		
223	BM 2X	08:00
213	W 2X	08:06
225	M 2X	08:12
240	BW 1X	08:18
243	BM 1X	08:24
242	W 1X	08:33
245	M 1X	08:39
252	M 4-	08:44
253	W 4X	08:51
228	BLM 1X	09:00
247	BLM 2X	09:07
231	W 8+	10:45
261	M 8+	10:53

Heats		
228	BLM 1X	09:00
231	W 8+	10:45
240	BW 1X	08:18
242	W 1X	08:33
243	BM 1X	08:24
245	M 1X	08:39
247	BLM 2X	09:07
252	M 4-	08:44
253	W 4X	08:51
261	M 8+	10:53

FINAL TIME TABLE FINALS

Saturday May 06

101	MU13 1Xpol	10:00
102	WU13 2X	10:12
103	MU15 1Xpol	10:20
104	WU15 2X	11:07
105	DW 1X	11:27
106	DM 2X	11:35
107*	MU19 4X	12:01
108*	WU19 4-	12:25
109*	LM 4X	12:34
110*	WU19 1X	12:38
111*	MU19 4-	13:08
112*	BW 2X	13:17
113*	LW 4X	13:21
114*	W 2X	13:25
115*	MU19 1X	13:30
117*	BM 2-	14:10
118*	LW 2X	14:14
119*	M 2-	14:18
120*	BM 2X	14:22
121*	M 4+	14:28
122*	M 2X	14:32
123*	BLM 2X	14:36
124*	W 4-	14:40
125*	LM 2X	14:44
126*	WU19 8+	14:49
127*	LM 4-	14:40
128*	WU19 2X	15:00
129*	MU19 8+	15:24
130*	W 4X	15:34
131*	BM 4-	15:38
132*	W 2-	15:42
133*	M 4-	15:47
134*	BM 1X	15:51
135*	LM 2-	15:56
136*	M 1X	15:59
137*	BLM 1X	16:03
138*	MU19 2X	16:07
139*	BM 4X	16:37
140*	LM 1X	16:42
141*	BW 1X	16:47
142*	M 4X	16:52
143*	W 1X	16:56
144*	BLW 1X	17:00
145*	W 8+	17:05
146*	LW 1X	17:09
147*	WU19 2-	17:12
148*	WU19 4X	17:21
149*	MU19 2-	17:39
151*	MU19 4+	17:48
152*	M 8+ (B)	17:51
	M 8+ (A)	17:54
153	WU15 4X	18:00

Sunday May 07

Final		
201	MU13 2X	09:22
202	WU13 1Xpol	09:30
203	MU15 2X	09:42
204	WU15 1Xpol	10:02
205	DM 1X	10:32
206	DW 2X	10:40
207	MU19 4X	11:03
208	WU19 4-	11:13
209	WU17 1X	11:19
210	MU17 4X	11:34
211	MU19 2-	11:54
212	WU19 1X	12:00
213	W 2X	12:21
214	LM 4X	12:25
215	MU17 2-	11:54
216	BW 2X	12:28
217	MU19 4+	12:31
218	BLW 1X	12:34
219	LW 1X	12:37
220	W 2-	12:41
221	M 4+	12:45
222	MU19 1X	12:48
223	BM 2X	13:08
224	WU19 2-	13:11
225	M 2X	13:21
226	MU17 1X	13:24
227	WU17 2X	13:54
228	BLM 1X	14:14
229	WU19 4X	14:17
230	LM 1X	14:27
231	W 8+	14:31
233	BM 2-	14:35
234	LW 2X	14:38
235	LM 4-	14:41
236	M 2-	14:44
237	MU19 8+	14:48
238	MU17 4-	14:52
239	MU19 2X	14:55
240	BW 1X	15:17
242	W 1X	15:22
243	BM 1X	15:25
244	WU19 8+	15:29
245	M 1X	15:35
247	BLM 2X	15:39
248	WU17 4X	15:43
249	LM 2X	15:55
250	BM 4-	16:23
251	MU17 2X	16:00
252	M 4-	16:15
253	W 4X	16:19
254	LM 2-	15:55
255	LW 4X	16:23
256	BM 4X	16:23
257	MU17 8+	16:27
258	WU19 2X	16:33
259	MU19 4-	16:48
260	M 4X	16:56
	M 8+ (B)	17:00
261	M 8+ (A)	17:03
262	MU15 4X	17:10

“GHENT” PROGRESSION & HEATS SYSTEM

It is imperative that all participants of the race are behind the start at least 5 minutes before the indicated start time of the first heat.

Senior and Under 23 events:

If more than 5 crews have been entered, heats will be competed to select the 5 finalists. Once the starter knows the exact number of starting crews, he will announce the composition of the heats and the type of progression system.

Below you'll find the different systems, depending on the number of STARTING crews.

GHENT INTERNATIONAL MAY REGATTA PROGRESSION SYSTEM (SENIORS & UNDER 23) Hoe bereikt men de finale? - Comment accéder à la finale? - How to reach the final?												
# Startende ploegen # Équipes au départ # Starting crews	# Reeksen # de Séries # of Heats	Naar En To	H 1	H 2	H 3	H 4	H 5	H 6	H 7	H 8	H 9	H 10
<5	0	F (direct)	-	-	-	-	-	-	-	-	-	-
6 - 10	2	F	1 st & 2 nd and fastest 3 rd	1 st & 2 nd	-	-	-	-	-	-	-	-
11-15	3	F	1 st and 2 fastest losers	1 st	1 st	-	-	-	-	-	-	-
16-20	4	F	1 st and fastest 2 nd	1 st	1 st	1 st	1 st	-	-	-	-	-
21-25	5	F	1 st	1 st	1 st	1 st	1 st	-	-	-	-	-
26-30	6	S	1 st and 4 fastest losers	1 st	1 st	1 st	1 st	1 st	1 st	-	-	-
31-35	7	S	1 st and 3 fastest losers	1 st	1 st	1 st	1 st	1 st	1 st	1 st	-	-
36-40	8	S	1 st and 2 fastest losers	1 st	1 st	1 st	1 st	1 st	1 st	1 st	1 st	-
41-45	9	S	1 st and fastest loser	1 st	1 st	1 st	1 st	1 st	1 st	1 st	1 st	1 st
46-50	10	S	1 st	1 st	1 st	1 st	1 st	1 st	1 st	1 st	1 st	1 st
Semi finals (if more than 26)	2	F	1 st & 2 nd and fastest 3 rd	1 st & 2 nd								

All other events:

All competitors will row heats ‘on time’.

Once the starter knows the exact number of starting crews, he will announce the composition of the heats and the type of progression system.

In those events the overall ranking is made up based on the realized time of each crew.



Remarks:

- * Only A-finals are rowed (except M8+)
- * If for any reason, a qualified crew withdraws for the final, the organizing committee will contact the “lucky loser” and offer him the vacant place.

TRAFFIC RULES

In general

The regatta organizers as well as the jury do ask you to adhere strictly to the traffic rules described below!! More than 1100 crews, representing well over 3000 rowing seats have entered for this international rowing event.

Taking into account the narrow width of the regatta course and the fact there is only 1 lane to the start, in combination with the quick succession of starts we ask you to follow these rules strictly.

Training sessions

Towards the start:

Use **ONLY** the lanes **0** (bank Sport Gent), and **1**.

Do **NEVER** return along the way but continue to the start (0 meter) before returning to the finish.

Please turn behind the start pontoons and avoid disturbing the crews having test starts in the lanes **3**, **4** and **5**!

Towards the finish:

Use **ONLY** the lanes **3**, **4** and **5** (bank finish tower).

Neutral lane:

Lane 2 is the neutral lane! NEVER use lane 2.

Remark

When entering the regatta course, the crews using the boat area of the Gentse R.S. (1500m) need to come to the finish first using lanes **3**, **4** and **5**. Then follow the circuit as described above; **do NEVER cross the course at the 1500m mark (two small bridges).**

Racing sessions

Towards the start:

Crews may leave the pontoons maximum 30 minutes before their race.

Only use lane **0** (bank Sport Gent) and pay attention when you cross the finish, while races arrive. All crews have to enter the **0** lane between the big yellow/red buoys and the bank at the opposite side of the finish tower.

When races are passing, you must stop your boat. It is a proof of sportsmanship and respect for your colleagues racing.



Remark

When entering the regatta course, the crews using the boat area of the Gentse R.S. (1500m) need to come to the finish first using lanes 3, 4 and 5. Then follow the circuit as described above; **do NEVER cross the course at the 1500m mark (two small bridges).**

Warming up:

Until the 250 meter mark, all crews have to follow lane 0.

Warming up is **only permitted in lanes 2 and 3 and in the direction of the finish** between the 250 meter to the 750 meter mark.

Do NOT use lane 1 when rowing in the direction of the finish!

At the 750 meter mark turn again direction start and **ONLY** using lane 0 towards the start!

Once you have passed the 250 meter you cannot return and must continue to the 100 meter, where you have to wait for instructions from the jury member at the 100 meter.

From that moment on, you are under the orders of the starter!

Cooling down

After the race, cooling down is allowed in the 0 lane (opposite side of the finish tower), in the direction of the start and until the 1500m mark (2 small bridges). If a race comes through, **STOP** your boat and wait for instructions from the marshal at the 1500m.

Rowing back to the finish area is allowed in lanes 2, 3, 4 and 5.

Do NOT use lane 1 when returning to the finish!

Map

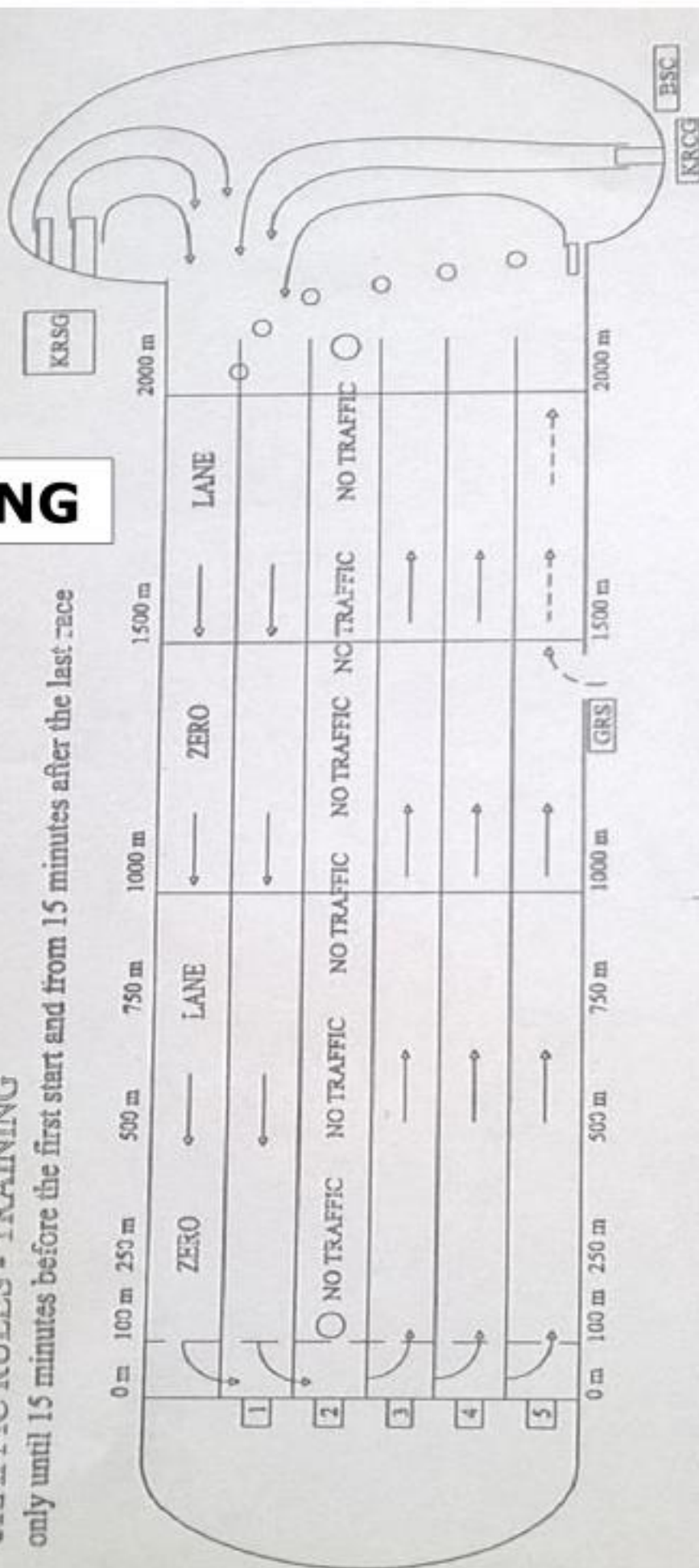
You will find the map of the traffic rules on pages 13 & 14, and on the displays at the embarkment pontoons.



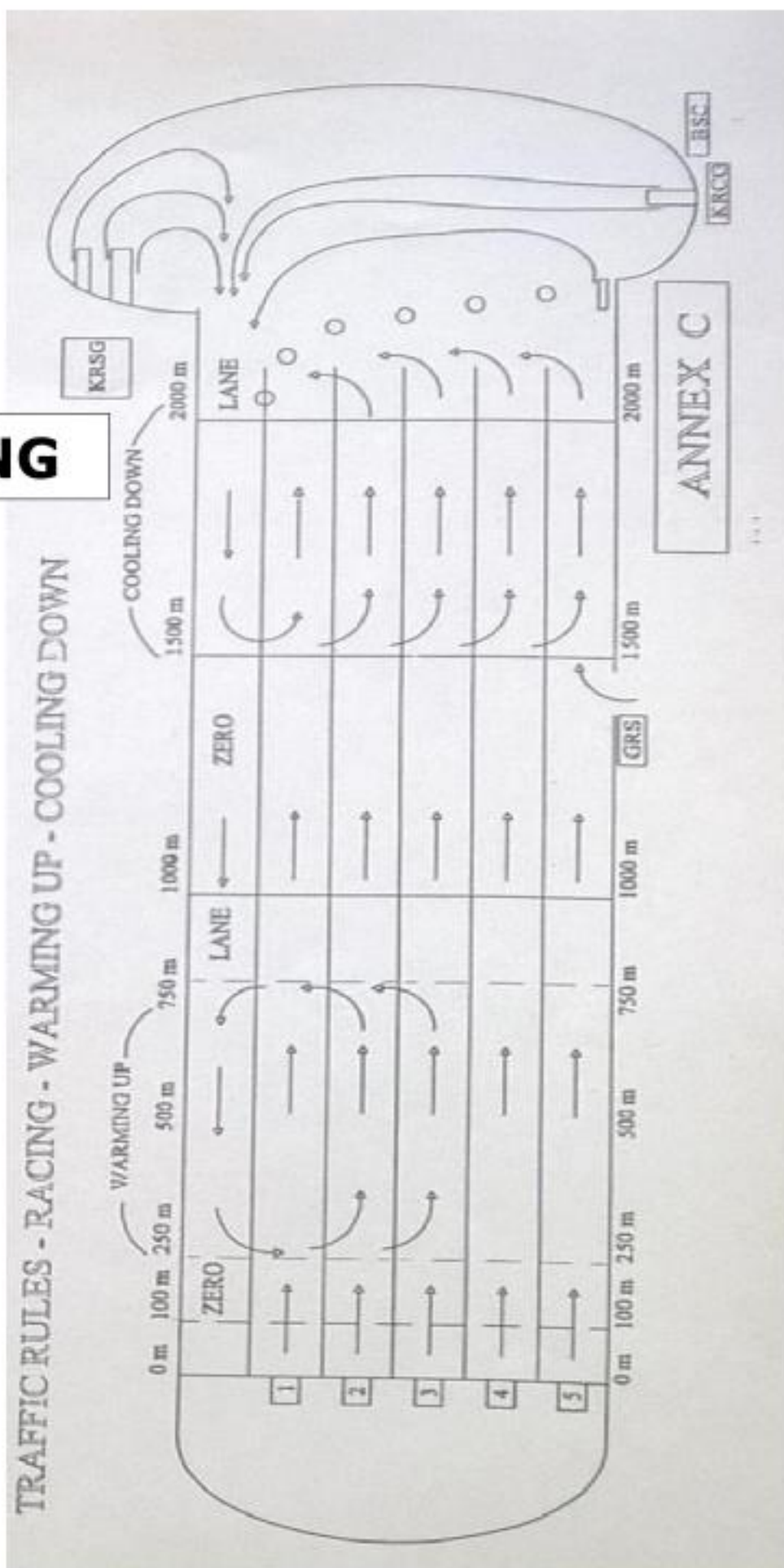
TRAINING

TRAFFIC RULES - TRAINING

only until 15 minutes before the first start and from 15 minutes after the last race



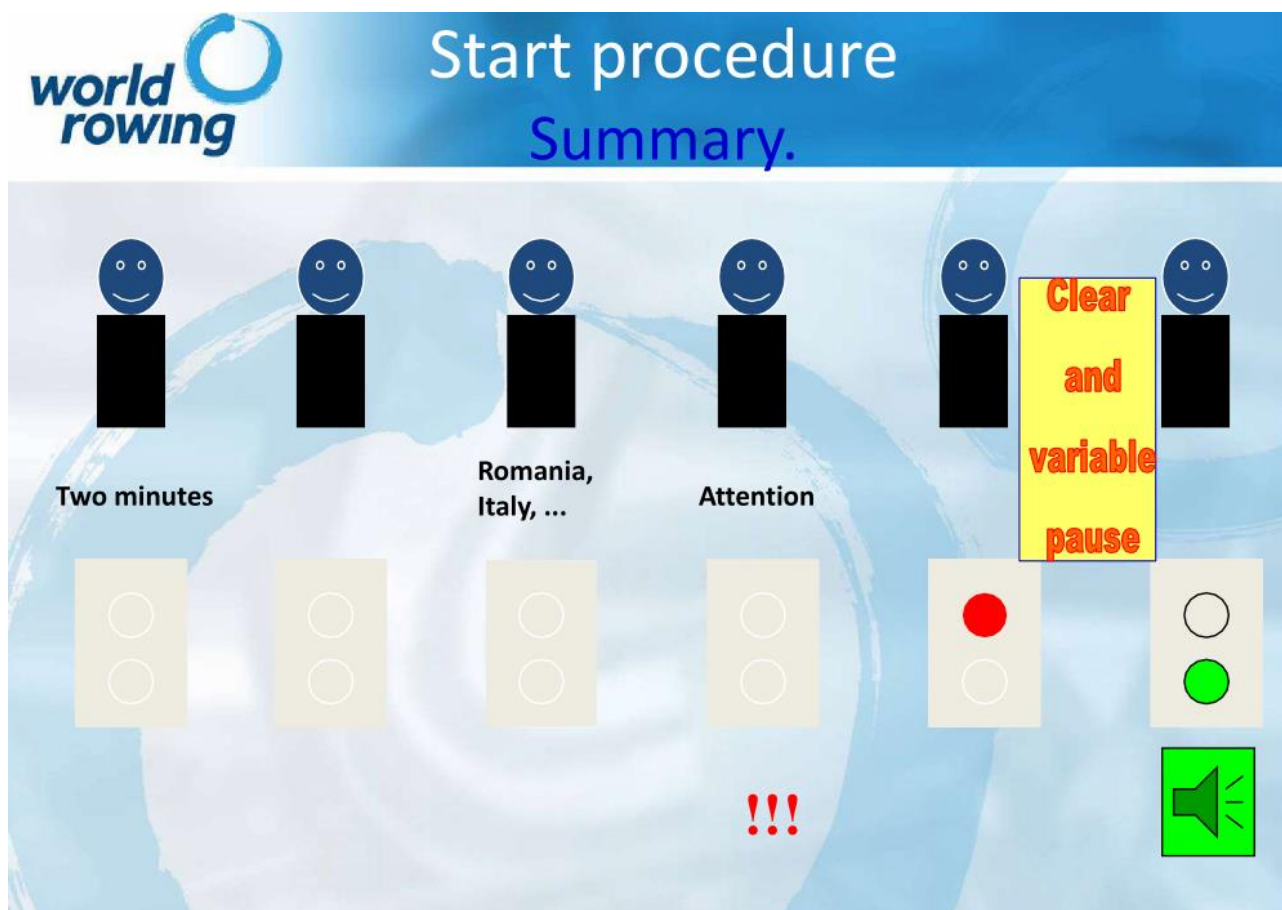
RACING



STARTING SYSTEM

0 METER

The start will be given with traffic lights and an acoustic signal.



1000 METER - MU15, WU15 & Novices

The start at the 1000 meter will be given with flag and voice.

CREWS CONTINUE TO ROW IN THE ZERO LANE TILL THE 500 m MARK.

DO NOT STOP AND IMMEDIATELY TURN THE BOAT OUT OF THE ZERO LANE WITH THE BOW BALL TOWARDS THE FINISH LINE (**EXCEPT M&WU15 4X**)(*).

PRE-STARTER WILL INDICATE HEAT AND LANE NUMBER.

PLACE THE BOAT IN THE INDICATED LANE, STAY IN THE LANE AND KEEP THE SAME LEVEL AS THE CREWS OF YOUR HEAT.

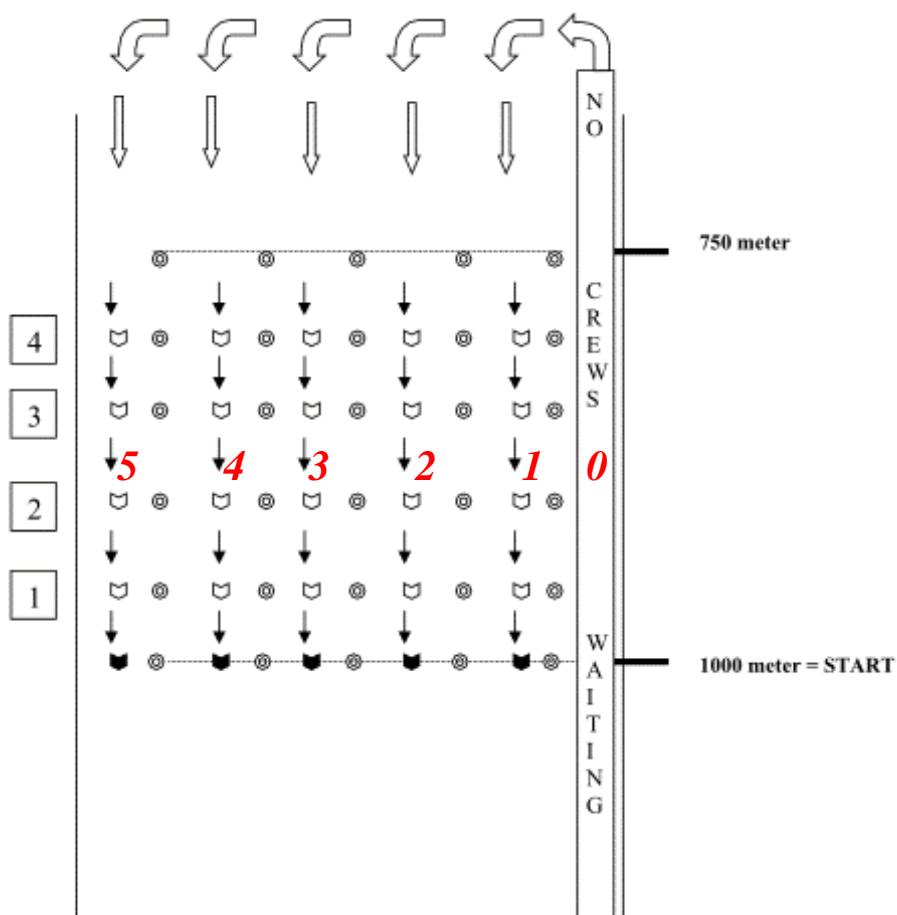
FROM 750 till 1000 m CREWS WILL PROCEED TO START BY BUOY ROW.

AT THE OPPOSITE BANK OF THE ZERO LANE INDICATIONS WILL SHOW 4, 3, 2 and 1, THIS MEANS : 4 =START within 4 HEATS

3 = START within 3 HEATS

2 = START within 2 HEATS

1 = START after HEAT on START CABLE



Events 103 (MU15 1x), 104 (WU15 2x), 105 (DW 1X), 106 (DM 2X), 153 (WU14 4X) (*), 203 (MU15 2X), 204 (WU15 1x), 205 (DM 1X), 206 (DW 2X) and 262 (MU14 4X) (*).

(*)ATTENTION:

ALL CREWS OF EVENT 153 (WU15 4X) and 262 (MU15 4X) MUST STAY IN THE 0 LANE TILL THE FINAL RACE OF THE M 8+ HAS PASSED THE 1000 METER. NO MOVEMENT BEFORE THE INSTRUCTIONS OF THE JURY !

1500 METER - MU13 and WU13

The start at the 1500 meter will be given with flag and voice.

CREWS CONTINUE TO ROW IN THE ZERO LANE TILL THE 1500 m MARK.

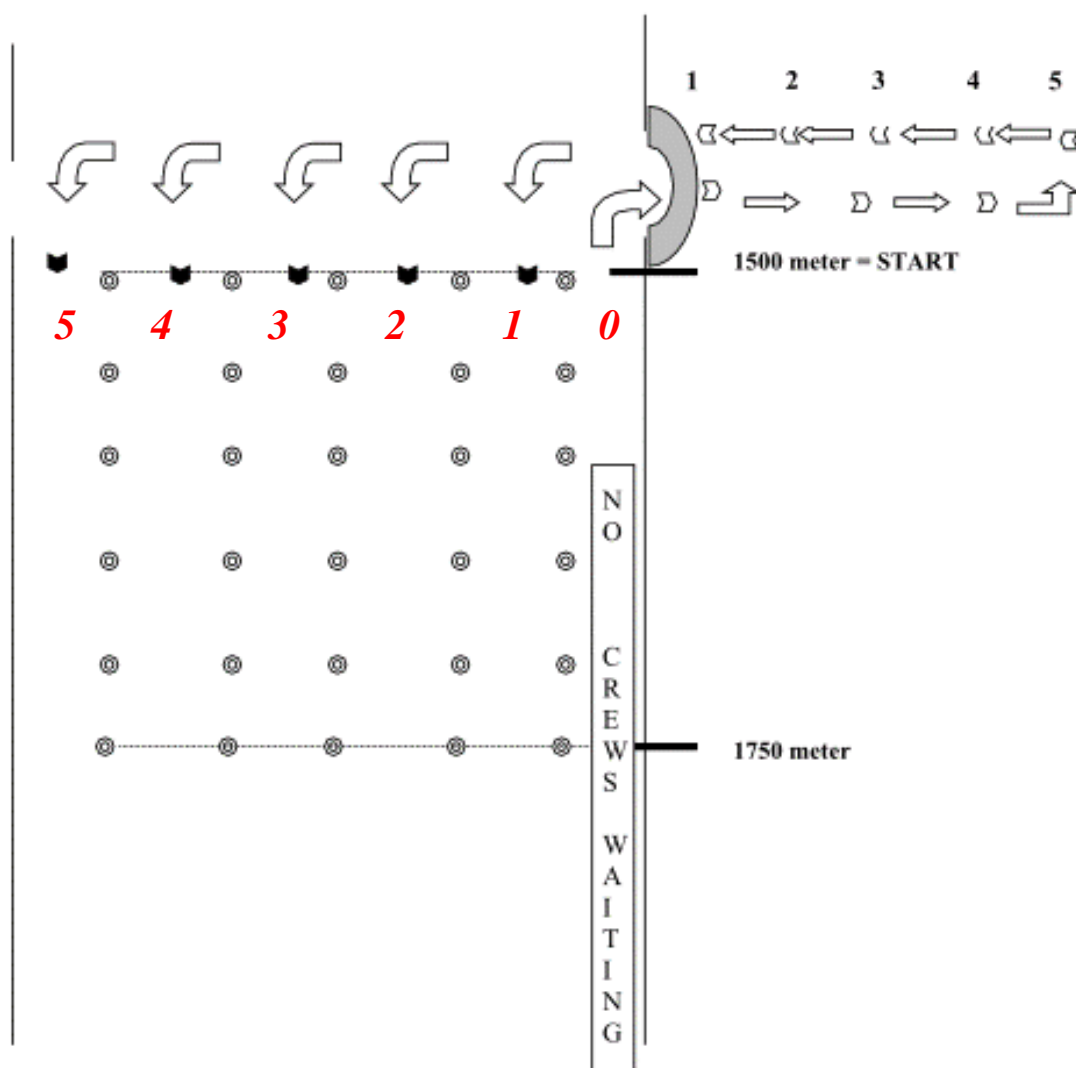
DO NOT STOP AND IMMEDIATELY TURN THE BOAT UNDER THE BRIDGE AT STARBOARD.

ON THE RIVER TURN THE BOAT WITH THE BOW BALL TO THE BRIDGE AND PUT THE BOATS IN BOW NUMBER ORDER.

STARTING WITH BOW NUMBER 1 CLOSEST TO THE BRIDGE.

WAIT FOR INSTRUCTIONS OF THE PRE-STARTER FOR HEAT AND LANE NUMBER.

ONCE REQUIRED, ROW YOUR BOAT UNDER THE BRIDGE TO THE REGATTA COURSE AND ENTER YOUR INDICATED LANE.



Events 101 (MU13 1x), 102 (WU13 2x), 201 (MU13 2X) & 202 (WU13 1x).

PROGRAM

In general

A program costs € 5,00 It contains detailed information concerning the regatta.

Sales Points - Merchandising & Catering

They are for sale at the information desk in Sport Gent, the souvenir shop, the Coca Cola Regatta Village and the finish tower.

ACCOMMODATION & FINANCES

Location

All information is available at the info desk in K.R. Sport Gent.

Responsibilities

Every team is responsible for the good behaviour of its members.

DRESSING ROOMS, SHOWERS AND TOILETS.

Location

Facilities are available in the 3 Ghent rowing clubs.

Valuable items

Please do not leave any valuables unattended. The organizing committee is not responsible for any loss or theft.

Toilets (Sport Gent)

A toilet car is located beside the parking area of Sport Gent. May we ask the athletes to use this facility to avoid any “congestion” at the toilet facilities on the upper floor of the Sport Gent clubhouse.

MEDICAL SERVICES

Location

On the spot:

The main medical center “**Het Vlaamse Kruis**” is situated in the fitness room of K.R. Sport Gent, near the athlete’s weighing.

Hospital:

Nearest hospital is AZ “Jan Palfijn” situated at the 1750 m mark, side of Sport Gent.
Telephone: **09/224.71.11**

RESCUE TEAM

Rescue team of the Polderse Reddingsclub is on standby.

Emergency telephone numbers (Belgium)

AMBULANCE/ M.I.C.U.	112
POLICE	101
FIRE BRIGADE	112



Anti-Doping control

If World Rowing, the national rowing federation or the local authorities should execute anti-doping control, the concerned crew members will be informed by the control commission.

CREW CHANGES / WITHDRAWALS / SUPPLEMENTARY ENTRIES

Location

All withdrawals and crew changes can only be made using the official forms and only at the information desk in the main room of K.R. Sport Gent.

Forms are available at the information desk

Missing names of crew members

All team managers are kindly requested to check the names, printed in the program. In case of MISSING or UNCORRECT names, please inform the information desk, main room Sport Gent, and let us know the correct composition of your crews, including coxswains, before the beginning of the regatta.

The jury may give a yellow card if not all names are entered in time at the information desk.

STARTING LISTS

The starting lists will be updated on regular basis, following the information forwarded by the team managers to the information desk. The updated lists will be displayed on the different display boards.

INTERNET

Website

All data and live results can be consulted on the web site:

<http://www.krsg.be>

Location

A screen can be consulted near the information desk in K.R. Sport Gent.

BOW NUMBERS

Location

All bow numbers must be collected at the information desk in Sport Gent.

Guarantee

A deposit of € 5 or equivalent will be asked for each bow number.

Remark:

1. Team managers are asked to return Saturdays bow numbers ASAP and collect new bow numbers for the races on Sunday.



2. The draw for the U17 and U19 races on Sunday only takes place after the Saturday races. The bow numbers for these races can only be collected as of Sunday morning.

BOAT PARK & FINISH AREA

Location

Large boating areas are available nearby the three Ghent rowing clubs.

WEIGHING

Location

The scales are located in the fitness room of K.R. Sport Gent

Opening Hours

Friday May 5, 2023	from 17h00 till 21h00 (test weighing, non-official)
Saturday May 6, 2023	from 06h51 till 16h48
Sunday May 8, 2023	from 07h00 till 15h27

World Rowing rules

Athletes

Lightweight	men	individual maximum	72,5 kg
		crew average	70,0 kg
	women	individual maximum	59,0 kg
		crew average	57,0 kg

World Rowing Rule 22 (extract):

Lightweight rowers shall be weighed wearing only their racing uniform on tested scales not less than one hour and not more than two hours before their first race of each lightweight event in which they are competing, each day of the competition.

On each occasion of weighing, each crew shall present itself together as a crew at the weighing center and shall be weighed as a crew. The weighing scales should indicate the weight of the rower to 0,1 kg.

The Control Commission shall require presentation of each rower's official identity card with photograph at the time of the first weighing of the rower or subsequently.

Coxswains

World Rowing Rule 21 (extract):

The minimum weight for a coxswain wearing the racing uniform is 55kgs.

To make up this weight, a coxswain may carry a maximum of 15 kgs deadweight which shall be placed in the boat as close as possible to his person. No article of racing equipment shall be considered as part of this deadweight. At any time, before the race or until immediately after disembarkation, the Control Commission may require the weight of the deadweight to be checked.

These provisions shall also apply to coxswains in lightweight races.

World Rowing bye-law to Rule 21:

Coxswains shall be weighed wearing only their racing uniform on tested scales not less than one hour and not more than two hours before their first race in each event in which they are competing on each day of the competition.

The weighing scales shall indicate the weight of the coxswain to 0,1 kgs.

The Control Commission may require on the occasion of the first weighing, or subsequently, the presentation of an official identity card with photograph.

Boats

Random boat weighing may be executed by the control commission.

World Rowing Appendix R3:

1x	14kg	2x	27kg	4x	52kg
2-	27kg	2+	32kg	4-	50kg
4+	51kg	8+	96kg		



Info Service Belgium N.V.
Informatie- & CommunicatieTechnologie





Digital platforms - Sportfederations & clubs - Web-applications - i-School

Info Service Belgium nv 00 32 (0) 9 265 97 70 www.isbapp.be/rowing
Dok Noord 2 - 9000 Gent info@infoserv.com



PRICES AND TROPHIES

In general

Each race will be awarded with at least a price for the first and the second. For the exact number of prices in every race, please consult the official program.

International Belgian and Flemish Championships on Saturday

On Saturday a medal ceremony will take place for the first, second and third of each **International Belgian Championship** (all senior male, female and lightweight events) immediately after each final at the victory pontoon near the finish tower.

On Sunday this will be the case for a number of VIP-races.

Below you will find an overview of the races with medal ceremony at the victory pontoon.

Saturday 6 May 2023

109	LM 4X
113	LW 4X
114	W 2X
118	LW 2X
119	M 2-
121	M 4+
122	M 2X
124	W 4-
125	LM 2X
127	LM 4-
130	W 4X
132	W 2-
133	M 4-
135	LM 2-
136	M 1X
140	LM 1X
142	M 4X
143	W 1X
145	W 8+
146	LW 1X
152	M 8+

Sunday 7 May 2023

219	LW 1X
225	M 2X
228	LMB 1X
230	LM 1X
236	M 2-
240	WB 1X
242	W 1X
243	MB 1X
245	M 1X
252	M 4-
256	MB 4X
261	M 8+

For all other races (Saturday & Sunday) the prices can be collected on **Sunday as of 14h00**, in the K.R. Sport Gent clubhouse.



TO FOLLOW THE RACES

In general

As the races are umpired from the road, it is imperative that absolute priority is given to the umpire cars.

Bicycles

All bicycles **must** follow the cycling path.

The traffic police will penalize the cyclists who don't follow the prescribed rule.

NO CYCLISTS ARE ALLOWED BETWEEN THE ROWERS AND THE UMPIRE CAR !!!

Cars

Through traffic will not be interrupted during the regatta on the roads along the racing course. The applicable traffic rules must be respected at all times!

The traffic police will penalize everybody who doesn't follow the rules.

Security

All people must strictly follow the indications given by the staff in charge of the security and/or the traffic police.

The organising committee is not responsible in case of an accident.

REMEMBER THE 2024 REGATTA DATES

May 11 & 12, 2024

Gent Motors



Jeep

